

First Floor **1212 sf**
 Living 17' x 11'-8"
 Dining 12'-6" x 14'-3"
 Kitchen 11'-6" x 17'
 Bedroom 11'-3" x 12'-9"
 Office 6'-4" x 12"
 Bath full

Second Floor **675 sf**
 Bedroom 1 11'-6" x 17'
 Bedroom 2 11'-6" x 10'
 Hobby 10'-9" x 6'-8"
 Bath full

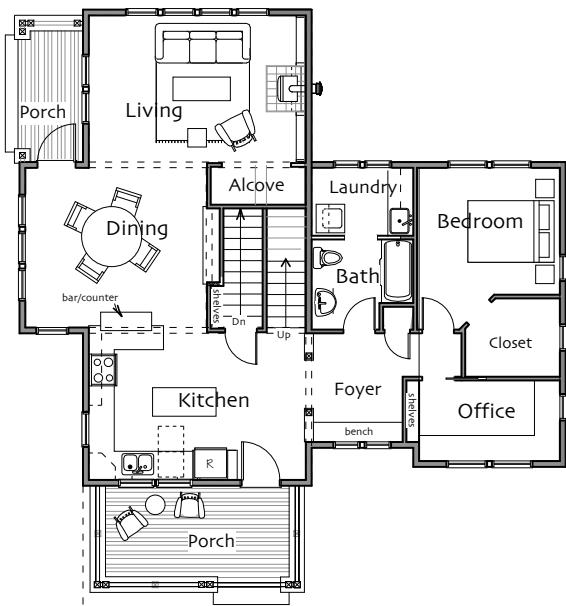
Loft >5' 100 sf
 Loft 15' x 2'-8"
 Attic 11'-6" x 2'-8"

Total Area **1987 sf**

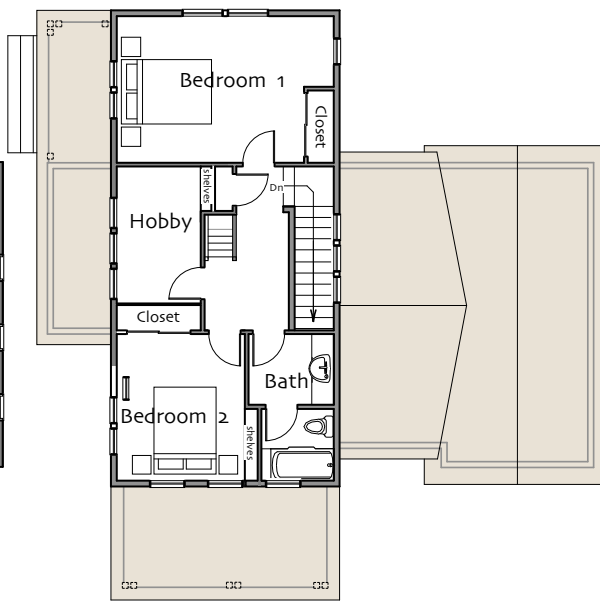
Basement **742 sf**

Total Overall 2729 sf
 (including basement)

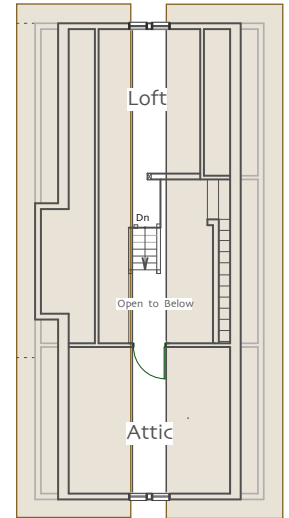
Footprint **43' x 46'**



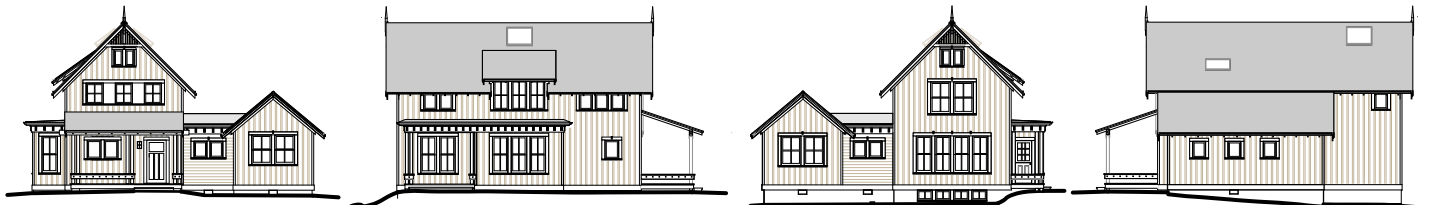
First Floor



Second Floor



Third Floor



© Ross Chapin Architects • Sizes are approximate / Plans are subject to change