

**First Floor**

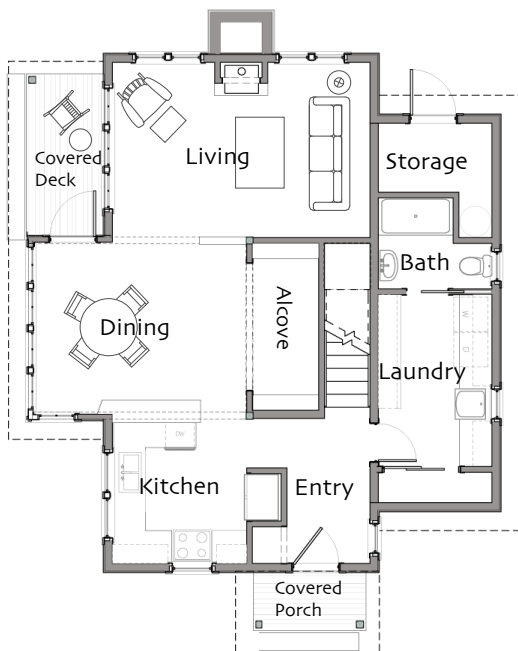
Living 11'-6" x 17'  
Kitchen 9' x 9'  
Entry 9'-6" x 5'-6"  
Dining 11'-4" x 14'  
Bathroom full  
Laundry 7'-6" x 11'-4"  
Alcove 11' x 4'-4"

**Second Floor >5'**

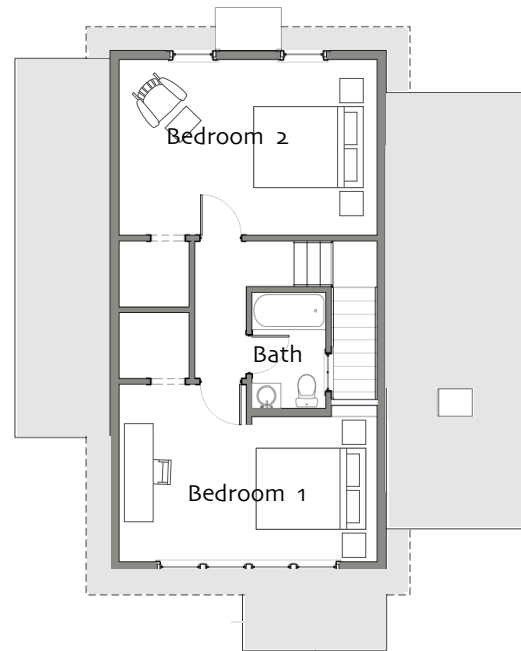
Bedroom 1 10' x 17'  
Bedroom 2 11'-6" x 17'  
Bath full

**Total Heated Area 1492 sq ft**

**Footprint 31' x 34'**



First Floor



Second Floor



© Ross Chapin Architects • Sizes are approximate / Plans are subject to change