

First Floor

Main Room 14' x 29'
 Kitchen 13'-8" x 7'-5"
 Office 11'-6" x 7'-9"
 Bathroom half

Second Floor >5'

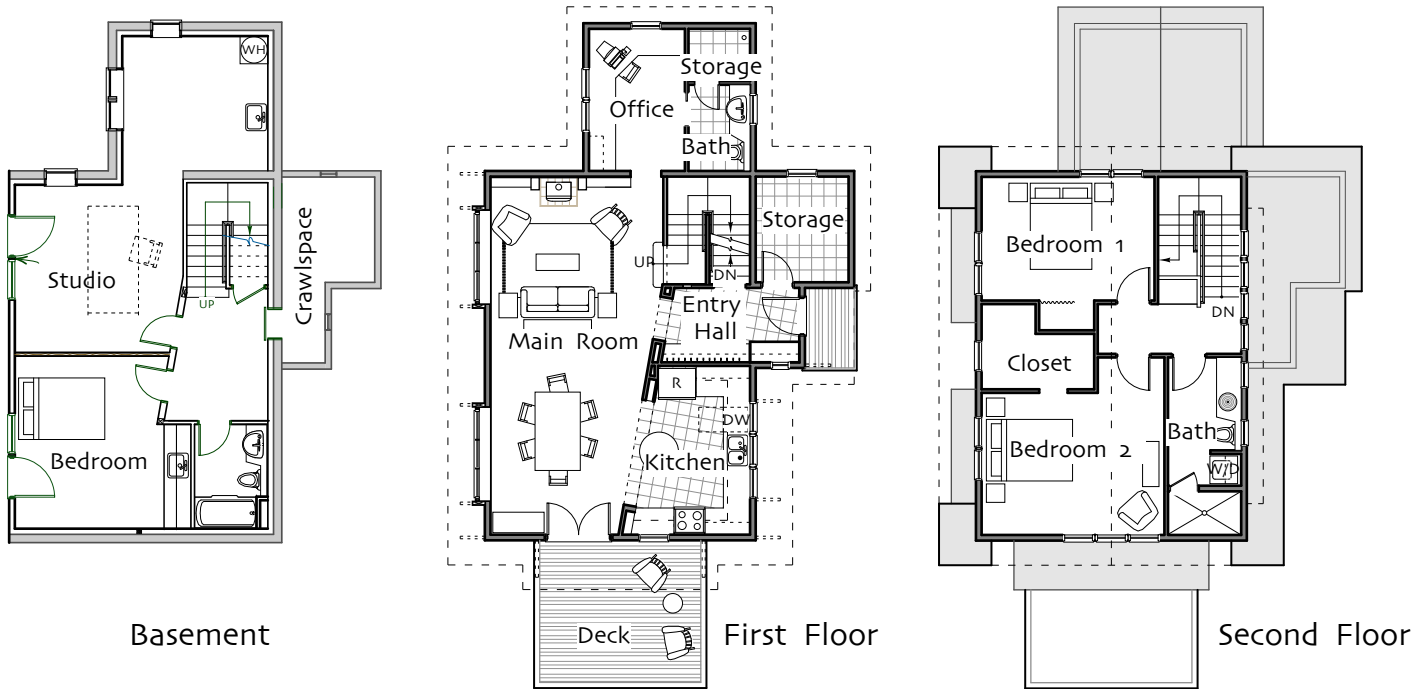
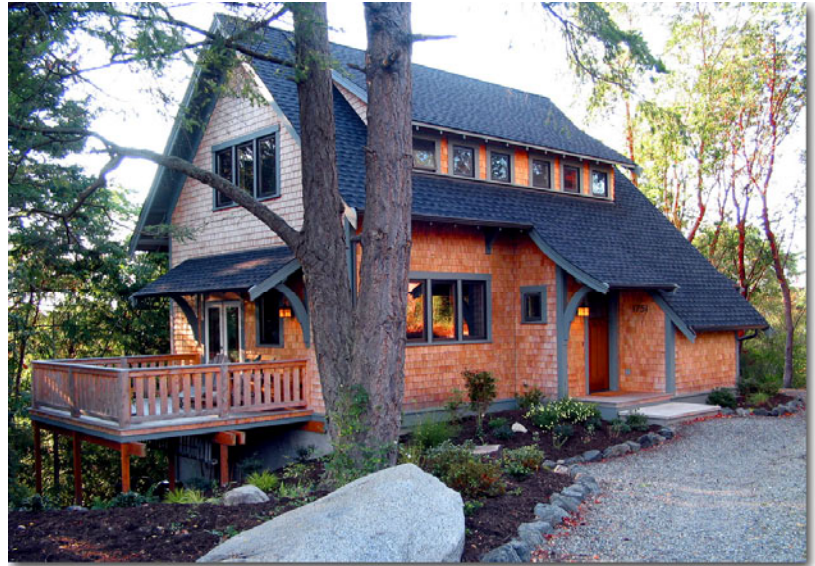
Bedroom 1 10' x 12'-3"
 Bedroom 2 14'-5" x 13'
 Bathroom full

Lower Floor

Studio 13'-6" x 13'-6"
 Guest Bedroom 14' x 12'
 Bathroom full

Heated Area: 2398 sq ft 4

Footprint: 54' x 30'



© Ross Chapin Architects • Sizes are approximate / Plans are subject to change