

First Floor

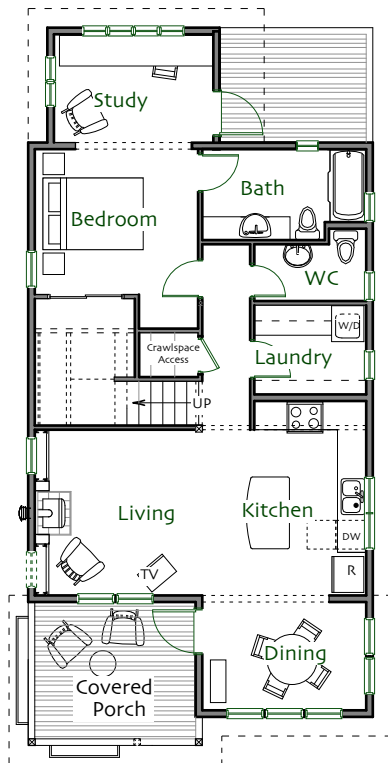
Living Room	12' x 11'-6"
Kitchen	11'-6" x 11'-6"
Dining Room	11'-6" x 8'-6"
Bedroom	11'-6" x 10'-6"
Study	7'-6" x 11'
Laundry	6' x 7'-6"
Bath	full
WC	half

Second Floor >5'

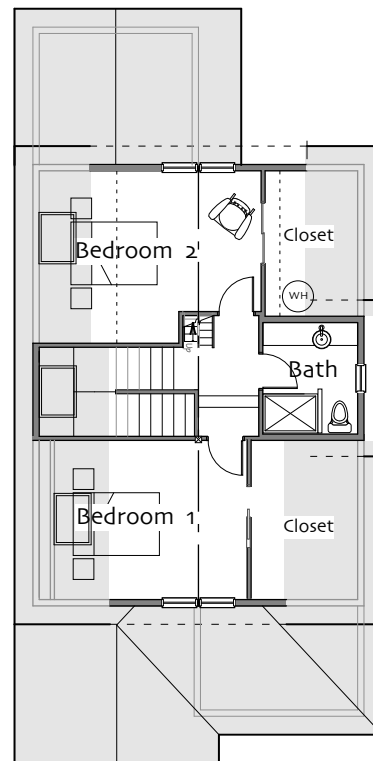
Bedroom 1	10'-8" x 11'-6"
Bedroom 2	13'-4" x 12'-6"
Bathroom	three-quarter

Total Heated Area 1548 sf

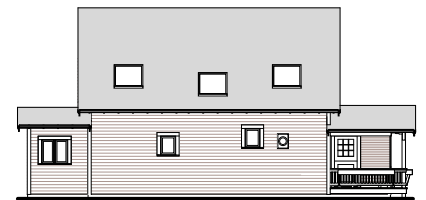
Footprint 24' x 50'



First Floor



Second Floor



© Ross Chapin Architects • Sizes are approximate / Plans are subject to change