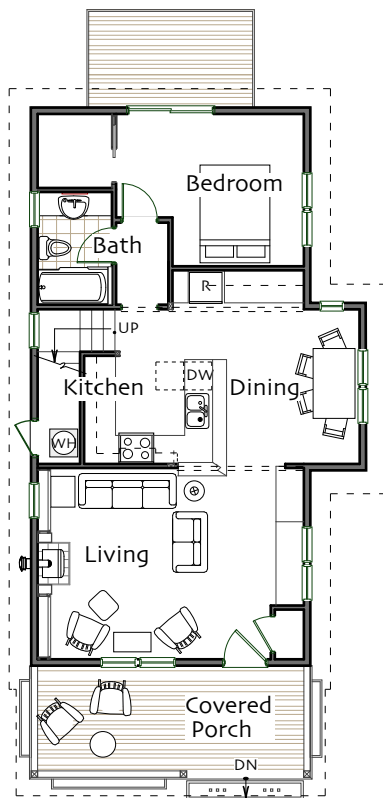


First Floor
 Living Room 19' x 13'-6"
 Kitchen 10'-4" x 11'
 Dining Room 9'-6" x 11'
 Bedroom 11' x 13'-6"
 Bathroom full

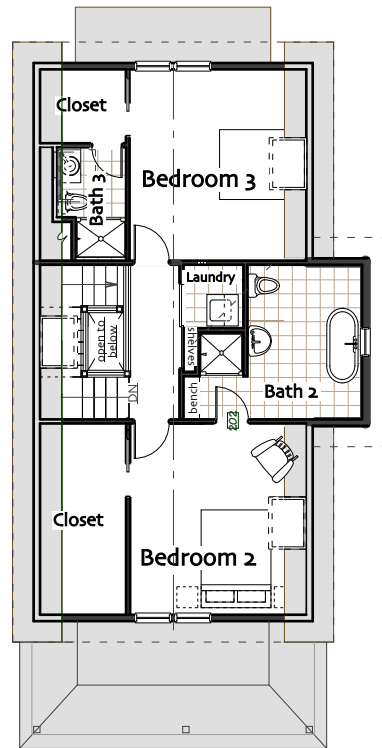
Second Floor >5'
 Bedroom Suite 11' x 13'-6"
 Bedroom 2 11' x 13'-6"
 Bathroom 1 three-quarter
 Bathroom 2 full

Total Heated Area 1569 sq ft

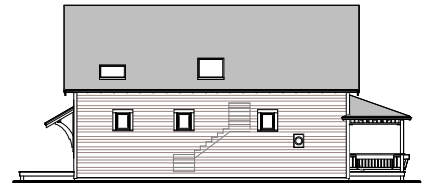
Footprint 24' x 57'



First Floor



Second Floor



© Ross Chapin Architects • Sizes are approximate / Plans are subject to change