

First Floor

Living Room 12' x 11'-9"
Kitchen 9'-5" x 8'-2"
Dining Room 9'-6" x 11'-4"
Bedroom 11'-9" x 13'
Bathroom full

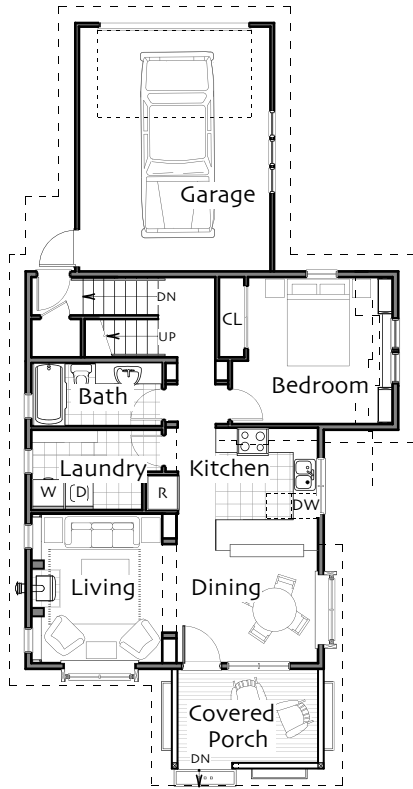
Second Floor >5'

Bedroom Suite 24'-4" x 8'-6"
Study 6'-5" x 8'-7"
Bathroom three-quarter
Loft 10' x 8'-10"

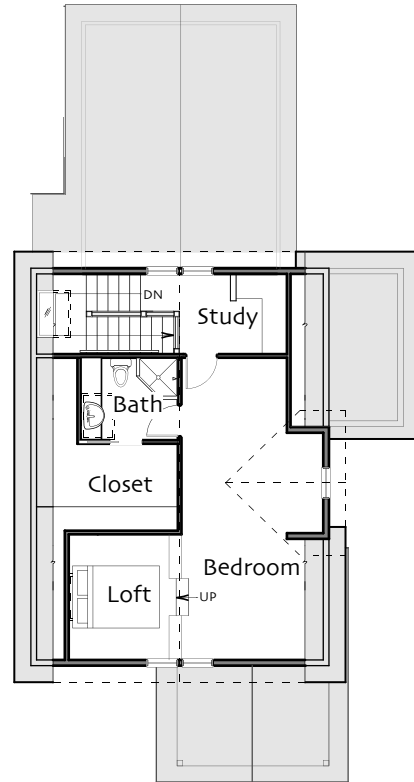
Garage 300 sq ft

Total Heated Area 1388 sq ft

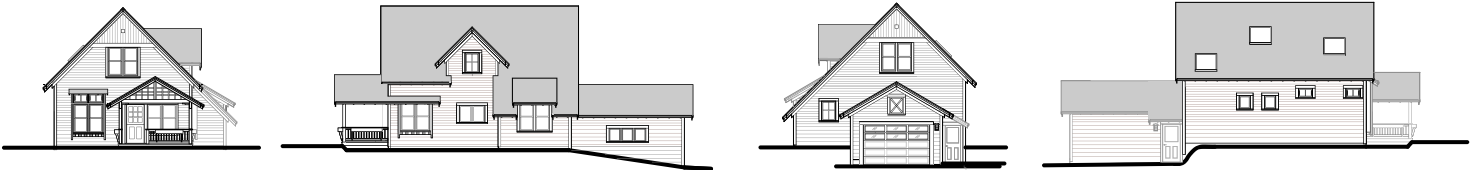
Footprint 30' x 60'
(inc. garage)



First Floor



Second Floor



© Ross Chapin Architects • Sizes are approximate / Plans are subject to change