



First Floor

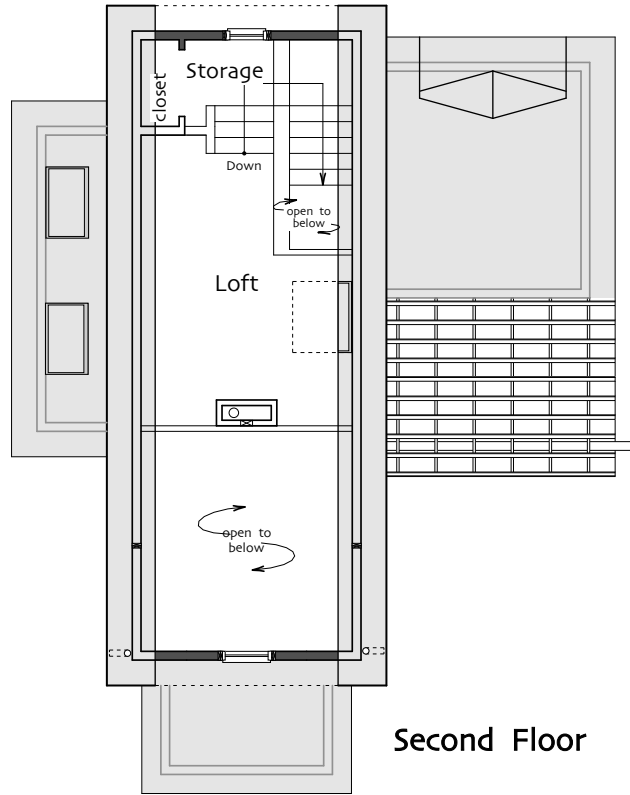
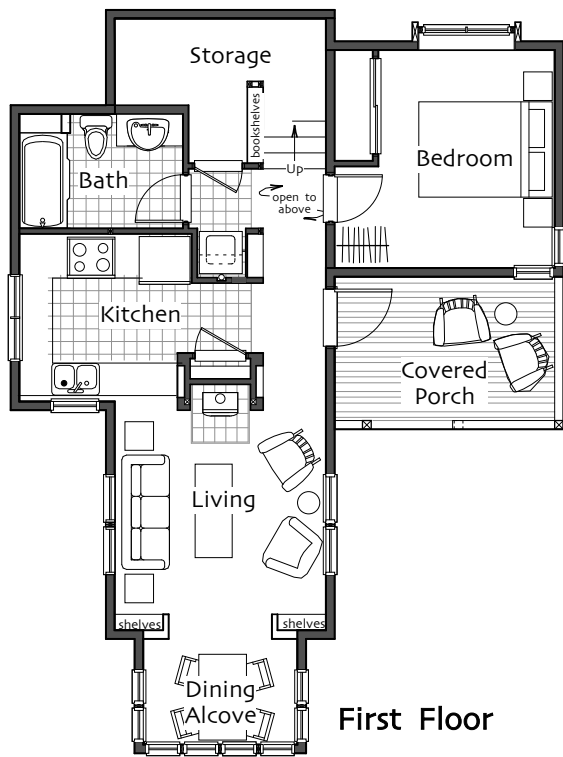
Living Room 11'-0" x 12'-0"
 Kitchen 8'-9" x 9'-0"
 Dining Alcove 5'-6" x 8'-0"
 Bedroom 9'-7" x 11'-6"
 Bathroom full

Second Floor >5'

Loft 15'-0" x 9'-6"

Total Heated Area 881 sq ft

Footprint 29' x 39'



© Ross Chapin Architects • Sizes are approximate / Plans are subject to change