

**First Floor**

Living 12' x 9'-6"  
 Dining 10'-6" x 11'-4"  
 Kitchen 9'-6" x 8'-3"  
 Bedroom 11' x 10'-2"  
 Bathroom full

**Second Floor >5'**

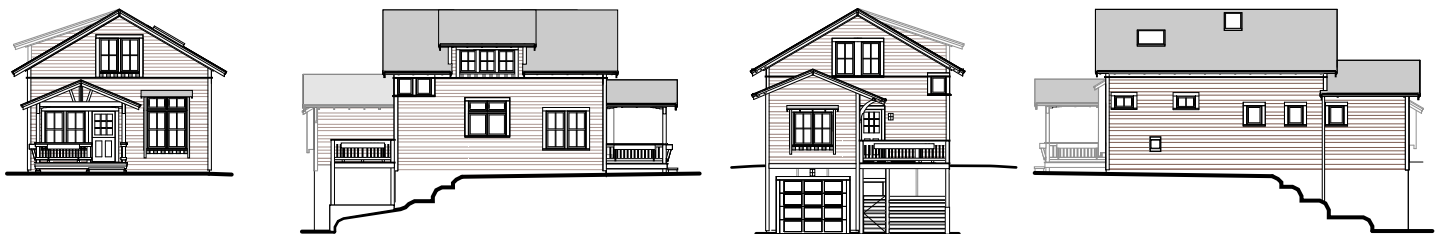
Bedroom 1 12' x 11'-6"  
 Bedroom 2 14' x 11'-6"  
 Loft 3' x 12'  
 Bathroom three-quarter

**Total Heated Area 1397 sf**

**Garage 11'-4" x 39'**

**Basement (unheated) 20' x 22'-6"**

**Footprint 24' x 48'**



© Ross Chapin Architects • Sizes are approximate / Plans are subject to change