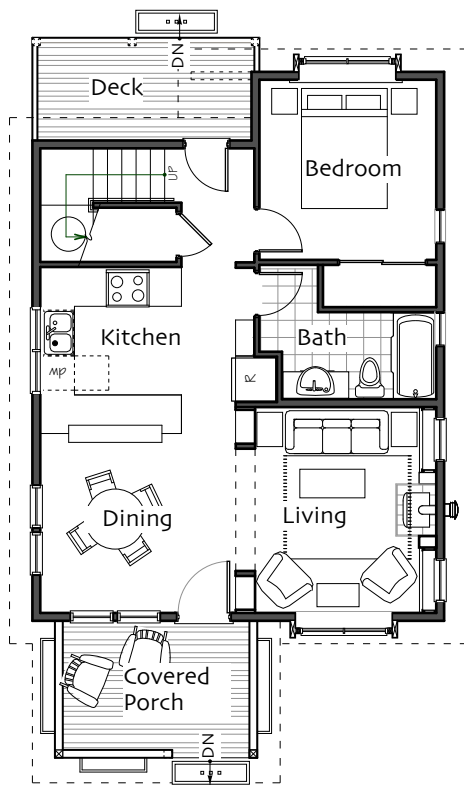


First Floor
 Living/Dining 12' x 23'
 Kitchen 10' x 11'
 Bedroom 10' x 10'
 Bathroom full

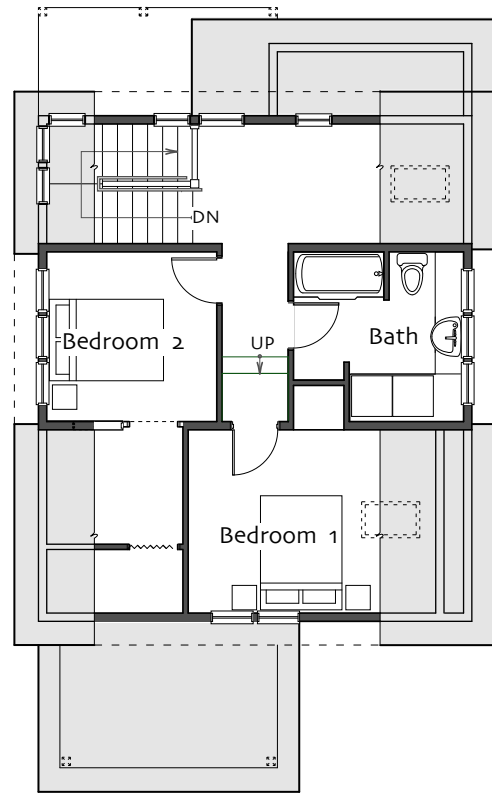
Second Floor >5'
 Bedroom 1 11' x 9'
 Bedroom 2 10' x 12'
 Study 6' x 8.5'
 Bathroom three-quarter

Total Heated Area 1302 sf

Footprint 24' x 42'



First Floor



Second Floor



© Ross Chapin Architects • Sizes are approximate / Plans are subject to change