

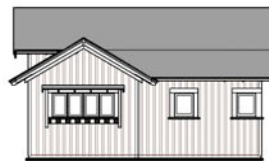
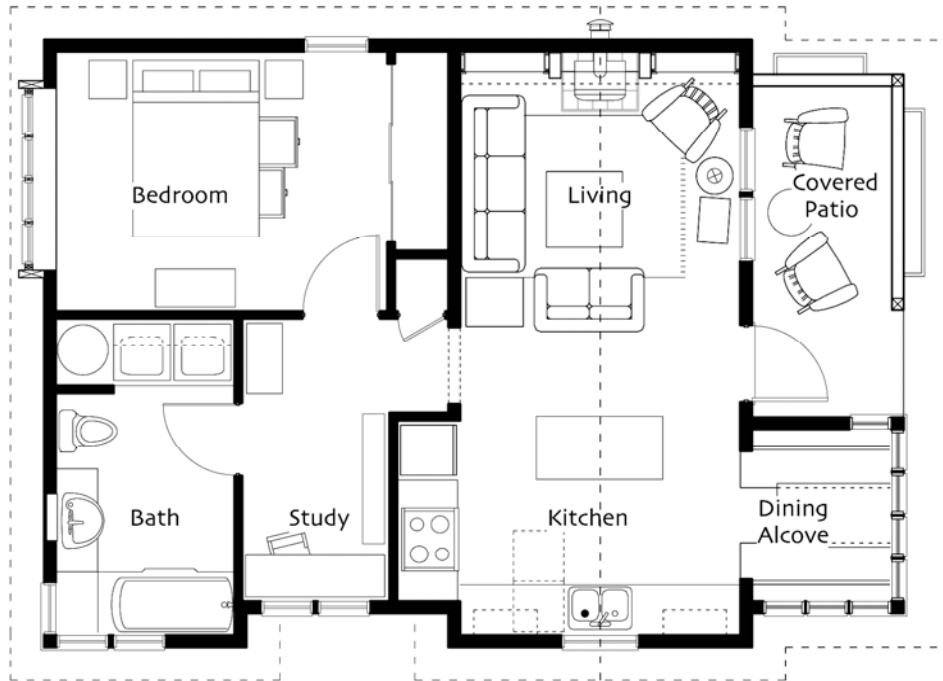


First Floor

Living/Kitchen 11' x 23'
 Dining Alcove 6'-10" x 5'-7"
 Bedroom 1 11'-6" x 16'
 Bath full w/Laundry

Total Heated Area 708 sq ft

Footprint 24' x 34'



© Ross Chapin Architects • Sizes are approximate / Plans are subject to change