

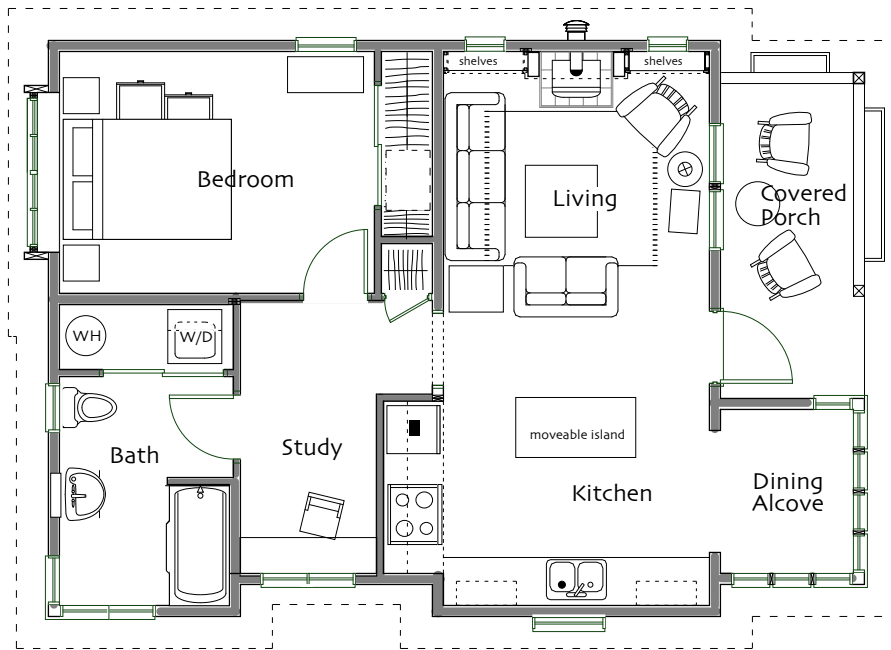


First Floor

Living/Kitchen 11' x 23'
 Dining Alcove 6'-10" x 6'
 Bedroom 1 10' x 15'-6"
 Study 5'-8" x 11'-4"
 Bath full w/Laundry

Total Heated Area 708 sq ft

Footprint 24' x 34'



© Ross Chapin Architects • Sizes are approximate / Plans are subject to change